

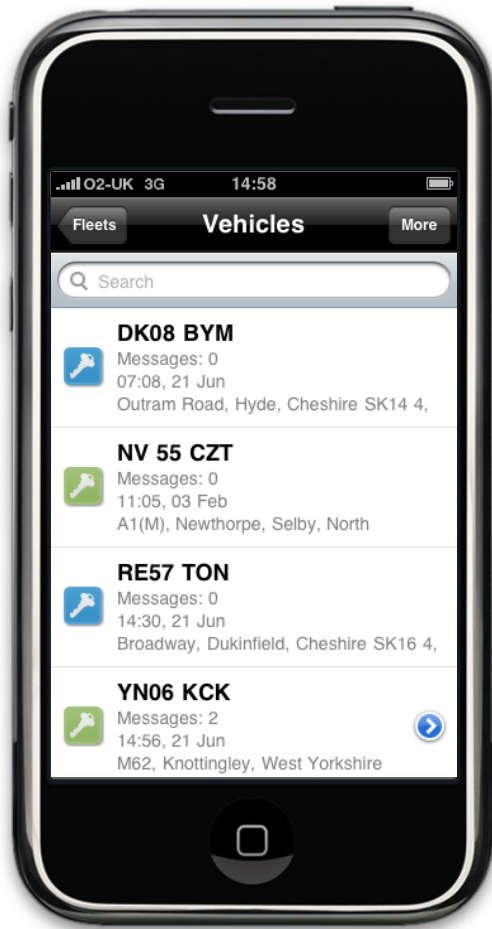


OnlineAVL 2 iPhone app

Lat 53 0' 15.77" N Lon 2 16' 9.63"

June 2010


Introducing the app



The Power of OnlineAVL 2 in the
palm of your hand.


Downloading the app



The **application** can be downloaded from the App store on any iPhone by touching the  button.

Simply search for OnlineAVL2 follow the simple instructions and the app will be on your Phone.

Activating the app

Activate My iPhone app 

Now you have downloaded the OnlineAVL 2 iPhone app, you are ready to activate your account.

Please complete all of the fields in the form below, and hit send. Our support team will verify your request and then send you your login details to the email address provided, this will typically take upto 24 working hours. If you have any problems while activating your account please don't hesitate to give us a call.

First name:

Surname:

Company name:

Email:

Phone:

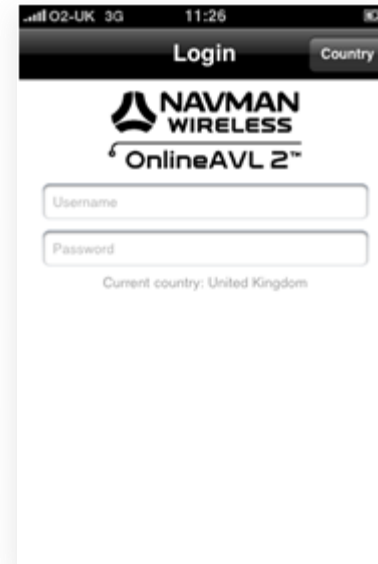
Please note that the email address you provide must match with the one supplied when you placed your order.

The email address you provide must match the one you supplied when you placed your order

To activate the app please visit
www.navmanwireless.co.uk/activate-my-iPhone-app.

Simply complete the fields in the form, hit send and we will send you your login details to the email address provided.

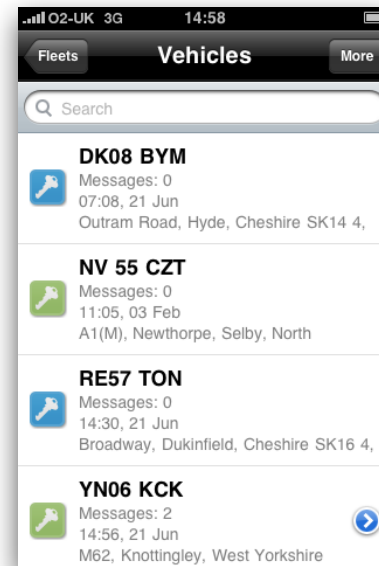
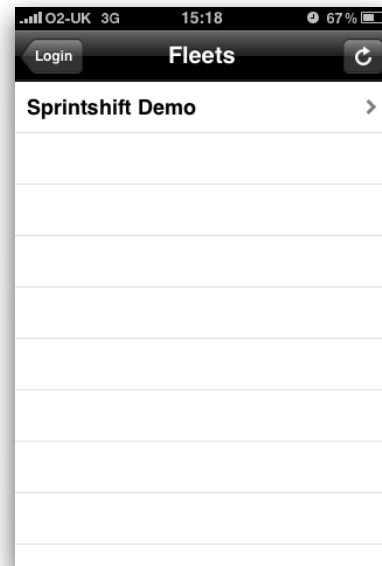
Login in



To login to the app you first need to select the country using the roller dex.

After selecting the country simply enter the username and password provided in the corresponding fields.

Accessing your fleet



Select the fleet you want to view.

Having selected your fleet you will be taken to your vehicle list.

What can it do?



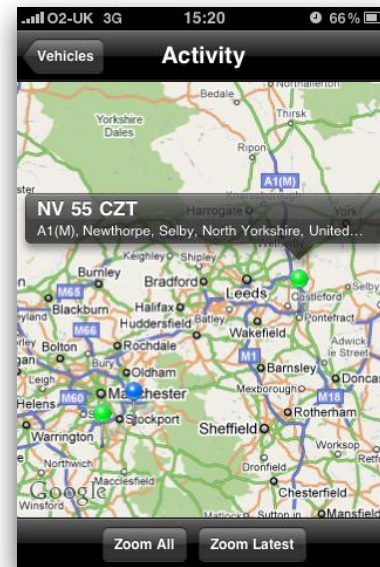
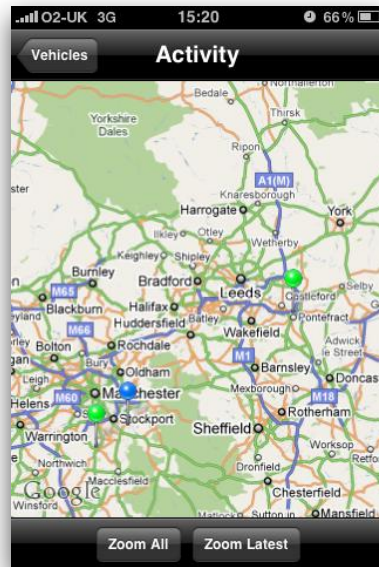
Refresh activity - Retrieve real time data from server.

Show all vehicles on map -View all vehicles / drilldown to view single vehicle.

New message - Type a freeform text message and allocate to a vehicle.

Route to - Select location, type message (with location details), select vehicle for job and dispatch.

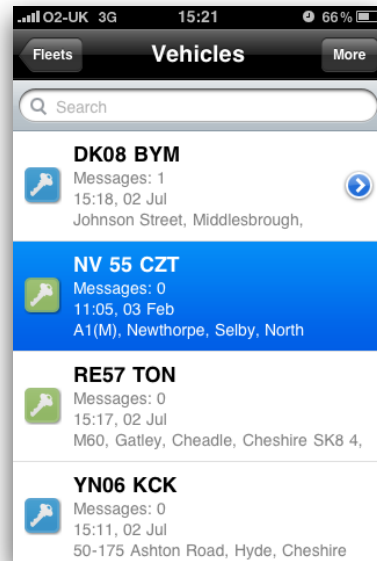
Show all vehicles




All vehicles are shown on a map in their current geographical location.

To view the location of one of the vehicles simply touch the pin and the vehicle name and address details will appear.

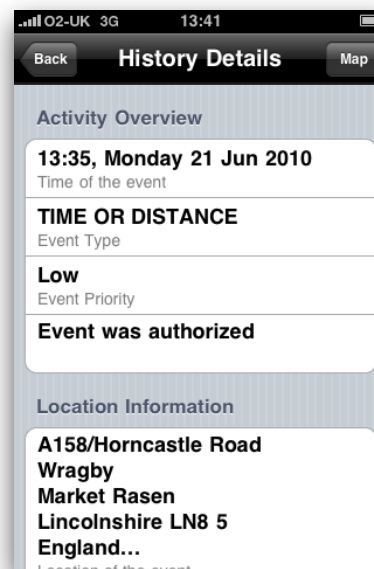
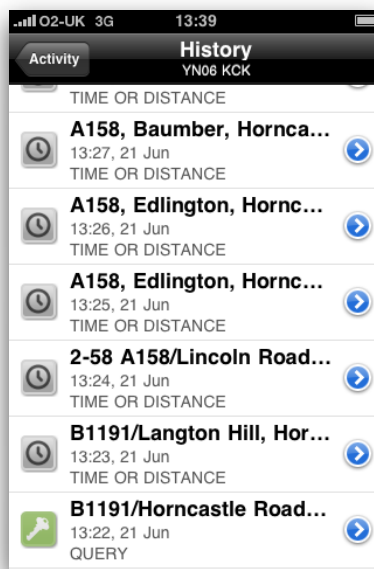
Show one vehicle



From the vehicle list select the vehicle you want to view by touching the  icon.

The vehicle location is shown on a map with full address details.

Vehicle history

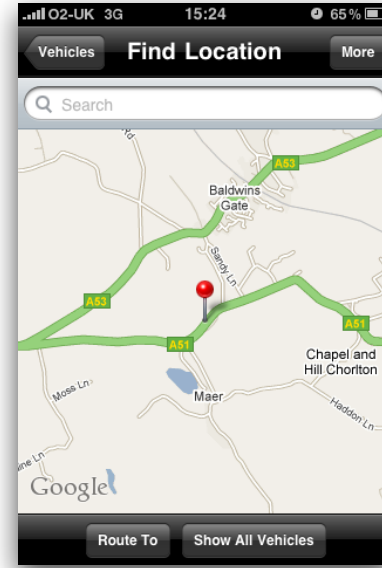
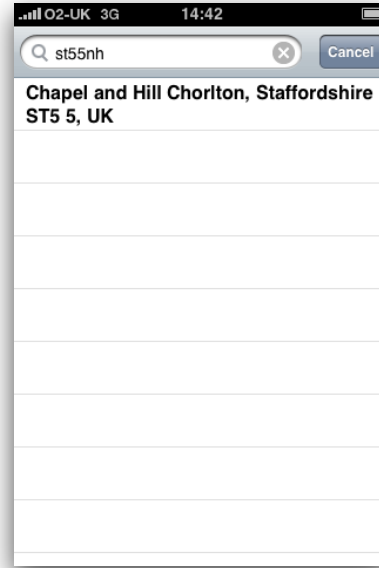


To view a vehicle history touch the history button when viewing the vehicle location.

You can see the vehicle's activity including any action which has taken place, for example the ignition being turned on or off.

To drill down into a particular action click on the  icon to the right of the update.

Route to

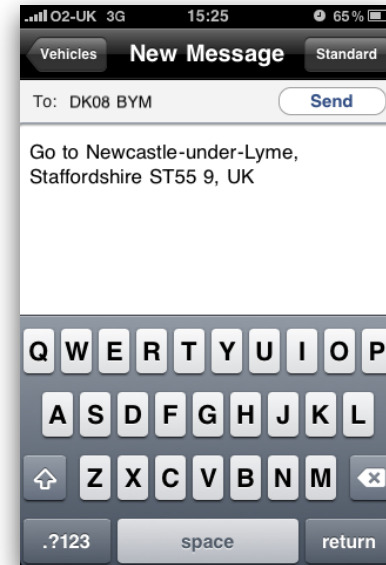
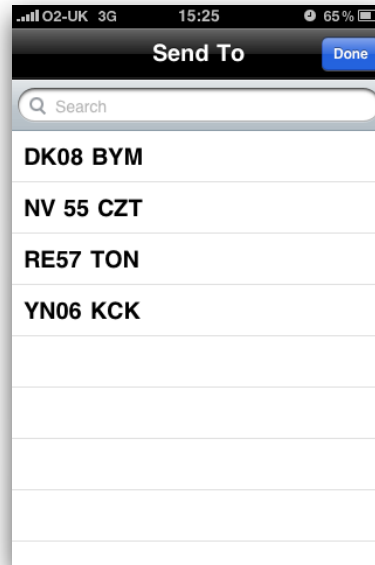
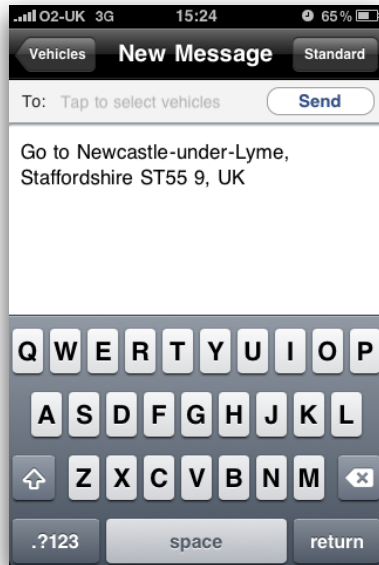


Search for location anywhere in the world

Select your location

Location will appear on map

Route to continued...

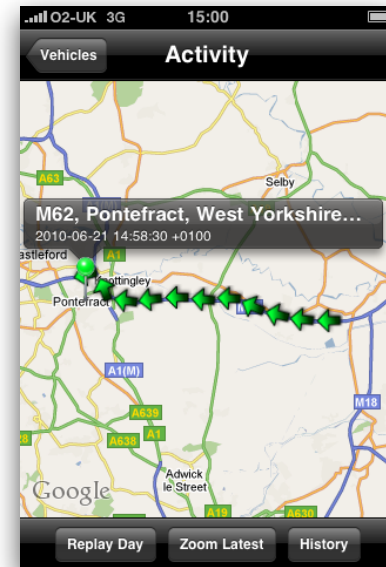
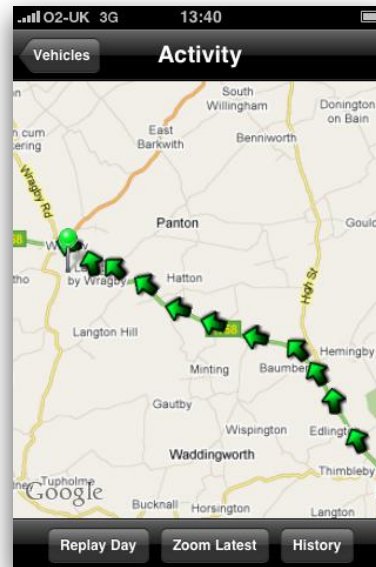
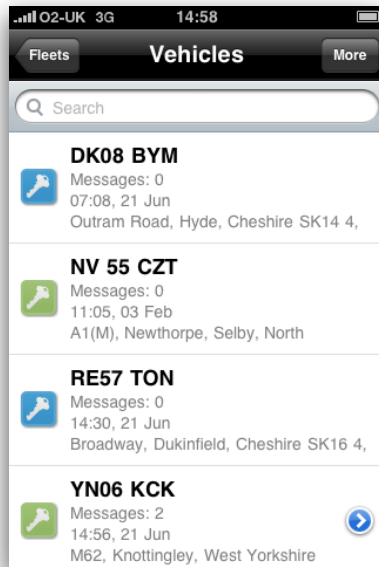


Select route to, address is embedded into the message

Select the driver you want to route

Hit send

Replay a day



Select vehicle and touch replay a day

Last 10 updates are displayed

Touch  to view details of update



Navman Wireless UK Ltd
Innovation Centre 2
Keele University Science Park
Keele
Newcastle Under Lyme
Staffordshire, ST5 5NH

Tel: +44 (0) 1782 557950
Fax: +44 (0) 1782 557979

www.navmanwireless.co.uk