

MDT-850 Quick Start Guide

TABLE OF CONTENTS

- 1.0 INTRODUCTION 2**
- 2.0 GETTING STARTED 2**
- 3.0 MDT KEYS 2**
- 4.0 MDT SCREEN 3**
- 5.0 MESSAGES 3**
 - 5.1 TO READ A NEW MESSAGE 3
 - 5.2 TO REPLY TO A NEW MESSAGE YOU HAVE JUST READ 3
 - 5.3 TO REPLY TO AN OLD MESSAGE 3
 - 5.4 TO SEND AN OUTBOUND MESSAGE 4
 - 5.5 TO EDIT A MESSAGE 4
- 6.0 DRIVER ID 4**
 - 6.1 HOW TO LOGON 4
 - 6.2 HOW TO LOGOFF 5
 - 6.3 IF THE MDT IS BEEPING 5
 - 6.4 IF THE VEHICLE IS OUT OF COVERAGE 5
- 7.0 CONTACT US 6**

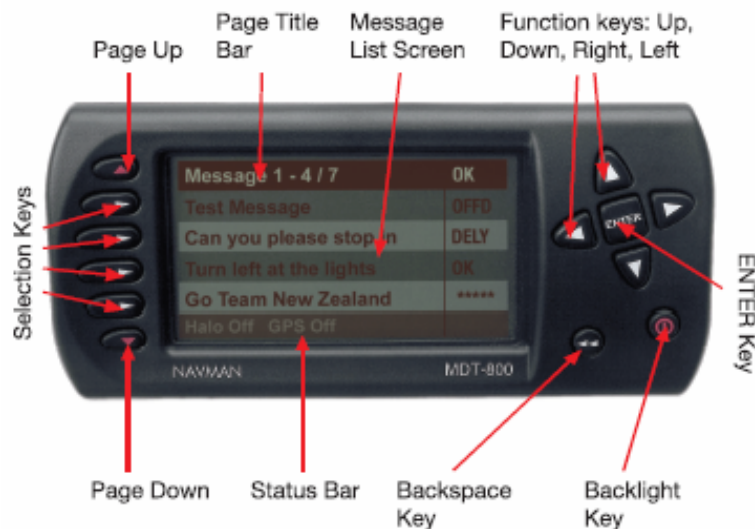
1.0 INTRODUCTION

The Navman MDT-850 is a Mobile Data Terminal that sends and receives two-way text messages from the dashboard to the OnlineAVL application loaded on a PC at your office. The MDT-850 can send preset replies or outbound messages.

2.0 GETTING STARTED

On installation or reset of the unit, the MDT-850 displays a start screen that indicates the product name and software version/date. After a few seconds, the display changes to the received message screen.

3.0 MDT KEYS



<u>Key(s)</u>	<u>Use to</u>
Page Up & Down	Scroll through message list
Selection Keys	Select a highlighted message from the list displayed on screen
Right & Left Function	Go back and forth between messages Select the digit of a message that needs editing
Up & Down Function	Scroll through list of messages four at a time Edit value of a message that needs editing
Enter	Select highlighted message on screen Accept received message & end the beep tone
Backlight	Cycle backlight brightness (six levels)
Backspace	Return to the message received screen

4.0 MDT SCREEN

The 'Title Bar' indicates the number of messages received in your MDT-850 terminal (eg 'Message 2-5/7' indicates that you can view messages #2 to #5 out of 7 messages in total). Pressing the 'Page Up & Down' keys will allow you to view your other messages.

If a message has more than 4 lines, the 'Title Bar' will state which line is being viewed (eg 'Line 1-4/6' indicates the MDT-850 screen is displaying lines 1 to 4 out of 6 lines).

Messages finishing with '...' indicates the existence of a sub-group of additional reply message to choose from. To view a sub-group, press the selection key matching the sub-group message.

5.0 MESSAGES

5.1 TO READ A NEW MESSAGE

1. Press 'ENTER' once when the MDT-850 sounds a beep tone (this will also end the beeping)

5.2 TO REPLY TO A NEW MESSAGE YOU HAVE JUST READ

1. Press 'ENTER' twice from the received message to display the list of preset replies
2. Press the 'Page Up & Down' keys to display the reply options
3. Press the 'Selection' key that matches the reply you want
4. You will hear a 2-tone alert when the message is received by the OnlineAVL application
5. The menu will then return to the message page with the first line of the messages displayed and their abbreviated response

Note: some replies will remove the received message from your terminal (eg 'Job Completed' or 'Delete Message')

5.3 TO REPLY TO AN OLD MESSAGE

1. From the message page, select the previously received message you need using the 'Selection' keys
2. Press 'ENTER' to display the reply menu
3. Press the 'Selection' key that matches the reply you want
4. You will hear a 2-tone alert when the message is received by the OnlineAVL application
5. The menu will then return to the message page

5.4 TO SEND AN OUTBOUND MESSAGE

This is sending a message to the OnlineAVL application that is not associated with receiving an inbound message on the MDT-850 terminal.

1. From the message page, press 'ENTER' once without selecting any received message
2. Press the 'Page Up & Down' keys to display the reply options
3. Press the 'Selection' key that matches the message you want
4. You will hear a 2-tone alert when the message is received by the OnlineAVL application
5. The menu will then return to the message page with your abbreviated reply message in the top right corner

5.5 TO EDIT A MESSAGE

This is only for preset reply messages with numbered areas.

1. Select the message you want from the message list
2. Use the 'Right & Left Function' keys to select the digits that need editing
3. Use the 'Up & Down Function' keys to edit the value
4. Press the 'Selection' key matching the edited message to send it
5. You will hear a 2-tone alert when the message is received by the OnlineAVL application
6. The menu will then return to the message page

Note: to change a blank space to a number, use the 'Up' key. To change a number to a blank space, use the 'Down' key after 0.

6.0 DRIVER ID

If the Driver ID (Driver Identification) functionality has been enabled on the vehicle's MDT by an OnlineAVL user, then a driver is required to enter a Driver PIN (determined by OnlineAVL user) to confirm their Driver ID.

The Driver PIN (Personal Identification Number) must be entered within a certain time frame (time determined by the OnlineAVL user, eg 40 seconds) otherwise the MDT will beep after this time has passed until a correct Driver PIN has been entered.

6.1 HOW TO LOGON

1. The Driver ID Logon screen will appear on the MDT 10-12 seconds after ignition on
2. The number '0' will appear in the space of the first digit. Use the 'Up & Down Function' key to change this digit to the first digit of your Driver PIN
3. Use the 'Right Function' key to move to the space of the next digit of the Driver PIN. Repeat step 2 to select the number
4. Repeat steps 2 & 3 until you have inserted your complete Driver PIN
5. Press 'ENTER' to confirm Driver PIN. The MDT will then send your PIN number back to OnlineAVL for authentication. This may take a few minutes depending on cellular network coverage.

If you entered the CORRECT DRIVER PIN

6. The Driver ID Status screen will appear with details of your name
7. Press any key on the MDT to exit the screen

If you have entered an INCORRECT DRIVER PIN

8. The Driver ID Status screen will appear with 'Logon Failed'
9. Press the 'Backspace' key to exit the screen
10. The Driver ID Logon Screen will reappear to request your logon. Follow steps 2-7

If you entered a PIN number that is ALREADY IN USE by another driver

11. The Driver ID Status screen will appear with 'Logon Failed! You are already logged on'
12. Press any key on the MDT to exit the screen
13. The Driver ID Logon Screen will reappear to request your logon. Contact your office immediately so they can re-confirm your Driver PIN and/or check why your Driver PIN is in use

6.2 HOW TO LOGOFF

1. Press the 'ENTER' key twice
2. The Driver ID screen will appear
3. Use the 'Selection' key to select 'Logoff'
4. The Driver ID Logoff screen will appear
5. Press 'Enter' to confirm your logoff OR press the 'Exit' key to cancel the action

Note: If you have logged off the Driver ID but have not turned the ignition off, then the Driver ID Logon screen will appear requesting you to logon.

6.3 IF THE MDT IS BEEPING

The MDT will beep to remind you to logon with a Driver PIN. You can stop the beeping by entering a valid PIN number. If you have not been assigned a Driver PIN and the MDT is beeping, contact your office immediately.

6.4 IF THE VEHICLE IS OUT OF COVERAGE

If the vehicle is out of coverage when you are inserting the Driver PIN, the Halo Qube tracking device will store the information and will send it when it is back in coverage.

If you have not logged on while in an out of coverage area, the MDT will not beep until it is back in coverage.

7.0 CONTACT US

Australia

Suite 2, 408 Victoria Rd
Gladesville NSW 2111
Australia

Tel: +61 2 9879 9000
Fax: +61 2 9879 9001

Support: supportwdgaus@navman.com.au
Web Site: www.navmanwireless.com.au

New Zealand (Head Office)

7-21 Kawana Street
Northcote, Auckland
New Zealand
Tel: 0800 447 735 or +64 9 481 0500

Support: 0800 GPS FLEET (0800 477 353) or
wirelessnzsupport@navman.com
Web Site: www.navmanwireless.co.nz

United Kingdom

Innovation Centre
Keele University Science Park
Staffordshire
ST5 5NH
United Kingdom
Tel: +44 (0) 1782 557 950

Support: 0845 4561660 or
support@navmanwireless.co.uk
Web Site: www.navmanwireless.co.uk